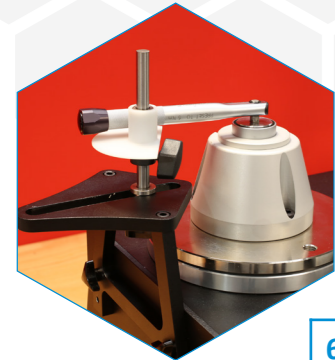


ATTACHMENTS & ACCESSORIES



60318 - Static Transducer Support Kit & * **60319** - Short Length Reaction Plate to calibrate small torque wrenches



60322 - FMT Quick Release Kit allowing for a more streamlined and efficient calibration laboratory



60323 - Pro-Test and Static Torque Block Adaptor Kit

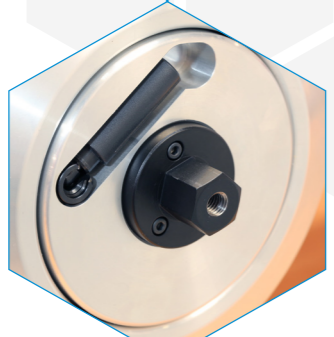


29214 - Square Drive Adaptor 1" Male to 3/4" Female Flanged

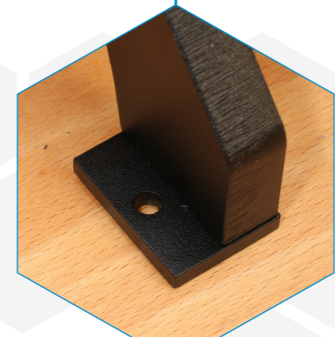
29215 - Square Drive Adaptor 1" Male to 1/2" Female Flanged

29216 - Square Drive Adaptor 1" Male to 3/8" Female Flanged

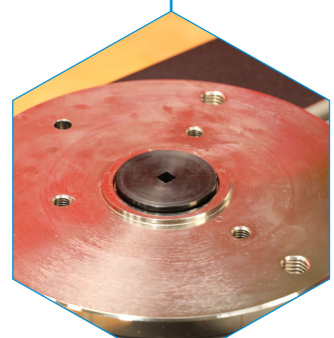
29217 - Square Drive Adaptor 1" Male to 1/4" Female Flanged



60324 - Hexagon Adaptor Kit with 22mm hexagon shaft allows users to speed up the work-flow by implementing their own solution to rapidly manoeuvre the wrench up to the reaction point



60326 - Bench Mounting Kit



60327 - FMT 25 Adaptor Kit

* When using the Short Length Reaction Plate the wrench will no longer be counter balanced.

GLOBAL SERVICE

Norbar is the only torque equipment manufacturer capable of offering tool and instrument calibration services to the original factory standard on four continents.

Accredited laboratories in Australia, USA, Singapore, China and India operate the same equipment and procedures as the UKAS accredited laboratory within our headquarters in the UK.



NORBAR TORQUE TOOLS LTD
Wildmere Road, Banbury, Oxfordshire, OX16 3JU
UNITED KINGDOM
Tel + 44 (0)1295 753600
Email sales@norbar.com



NORBAR TORQUE TOOLS
45-47 Raglan Avenue, Edwardstown
SA 5039
AUSTRALIA
Tel + 61 (0)8 8292 9777
Email enquiry@norbar.com.au



NORBAR TORQUE TOOLS INC
36400 Biltmore Place, Willoughby
Ohio 44094
USA
Tel + 1 866 667 2272
Email inquiry@norbar.us



NORBAR TORQUE TOOLS PTE LTD
194 Pandan Loop, #07-20 Pantech Business Hub
SINGAPORE 128383
Tel + 65 6841 1371
Email enquires@norbar.sg



NORBAR TORQUE TOOLS (SHANGHAI) LTD
91 Building- 7F, No. 1122, North Qinzhou Road,
Xuhui District, Shanghai
CHINA 201103
Tel + 86 21 6145 0368
Email sales@norbar.com.cn



NORBAR TORQUE TOOLS INDIA PVT. LTD
Plot No A – 168 Khairne Industrial Area
Thane Belapur Road
Mahape Navi Mumbai – 400 709
INDIA
Tel + 91 22 2778 8480
Email enquiry@norbar.in

www.norbar.com



NORBAR PRODUCT PORTFOLIO



Torque Screwdrivers



Torque Wrenches



Electronic Torque Wrenches



Manual Torque Multipliers



Pneumatic Torque Tools



Electronic Torque Tools



Torque Measurement Instruments



Torque Transducers

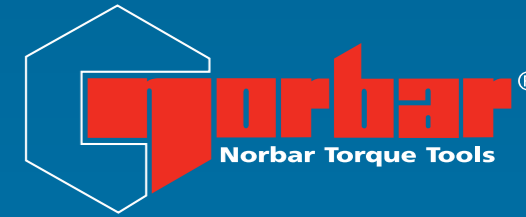


Ultrasonic Bolt Measurement



Calibration Services

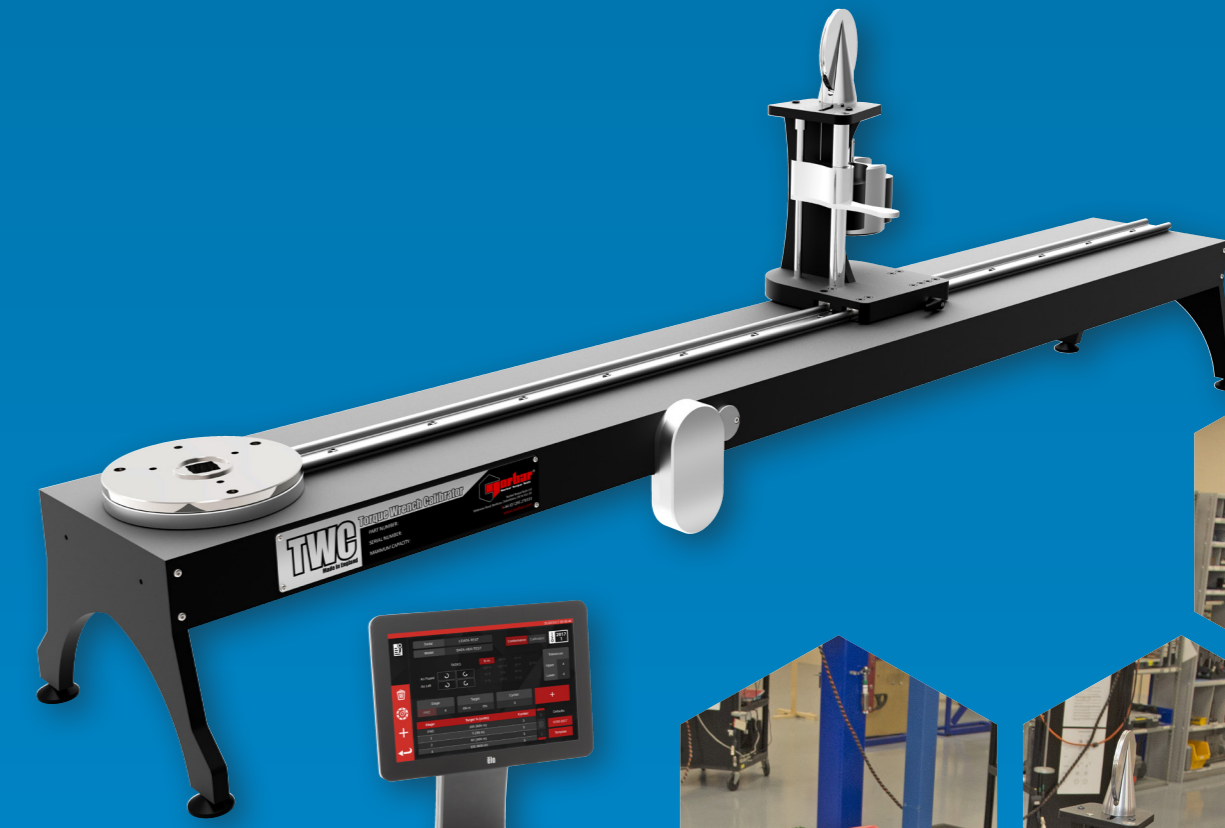
NEW



DRILCO

TORQUE WRENCH CALIBRATOR

ENABLING TORQUE WRENCH TESTING AND CALIBRATION IN ACCORDANCE WITH ISO 6789-1:2017 AND ISO 6789-2:2017



Distributed by

DRILCO

Avenida de Somosierra, 22E - 6 y 7
E-28703 S.S. de los Reyes (Madrid)
Tel. +34 916 591 900 · www.drilco.net

THE TORQUE WRENCH CALIBRATOR (TWC) ENABLES TORQUE WRENCH TESTING AND CALIBRATION IN ACCORDANCE WITH ISO 6789-1:2017 AND ISO 6789-2:2017

Counter balance reaction is designed to support the weight of the wrench so that the weight does not become a parasitic force within the calibration system. The floating nature of the support also means that the wrench is able to find its own natural level rather than being constrained as in many other loading devices. Any such constraint will be another parasitic force within the system. Patents apply

Compatible transducers include Flange Mounted Transducers, Static Transducers (when using part number: 60318) and Pro-Test (when using part number: 60323)

Can produce certification to ISO 6789-2:2017 when used with T-Box XL™ software version 3.0.0.X and TMS version 4.0.X

Two speed gearbox designed for a sufficient balance of speed and control by allowing for both fast loading of the torque wrench and a slower more precise loading (Manual version only)

Lightweight alloy construction ensures the TWC is easily transported, making it suited for mobile laboratory applications

Rotating transducer design ensures that the load is applied 90° to the torque wrench handle. The benefit of this precise alignment is that forces are applied squarely to the load point of the handle

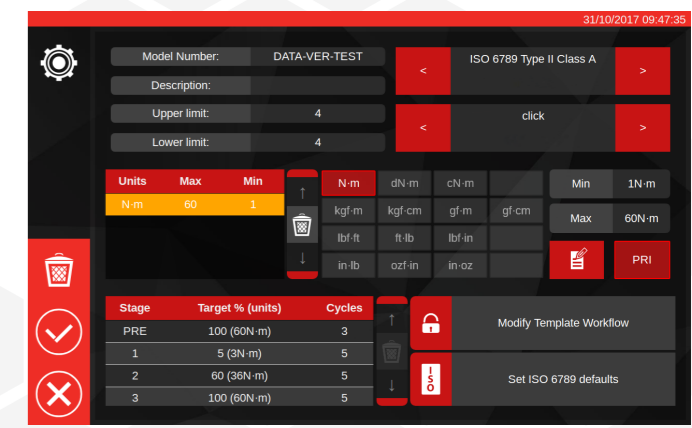
KEY ADDITIONAL FEATURES FOR AUTO VERSION

- Supplied with a powerful yet simple touchscreen User Interface (UI) (keyboard and mouse also supported if desired)
 - Flexible tool template system; minimises number of templates required to cover a wide range of tools, aiding efficient use
- Programmable calibration workflow for each template, can be pre-set to ISO compliant flow for the given tool for a faster set-up or can also support bespoke non-ISO compliant workflows
- Calibration job management; book calibrations, track progress of previous bookings and resume them
- Automated management of calibration and conformance workflows for non-indicating tools
- Intelligent rate control system ensures fast cycling of tools while maintaining compliance with 2017 standards
- Environmental monitoring (humidity/temperature) to ensure compliance with calibration standards
- Automated management of uncertainty data for ISO 6789-2:2017 calibrations, guiding the user through the process using dynamically generated instructions based on the current tool's ISO classification and workflow
- Inbuilt data analysis and certification generation seamlessly move from calibration/conformance procedure to certificate generation, no third-party software required
- A substantial amount of inbuilt storage allowing for year's worth of calibration data through normal use

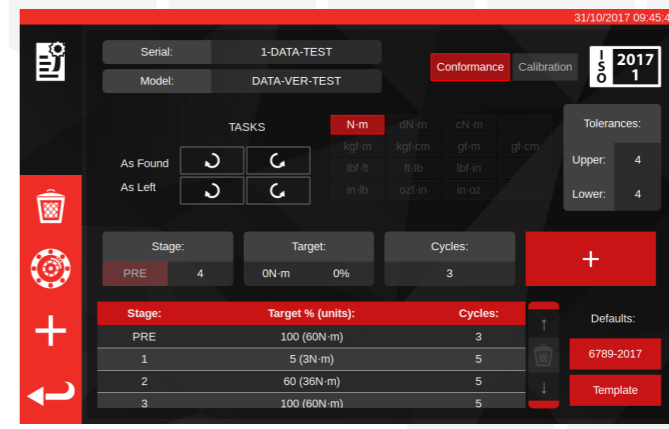
The Automated TWC is currently in development and is subject to change, therefore the information provided may alter upon the launch of the product.



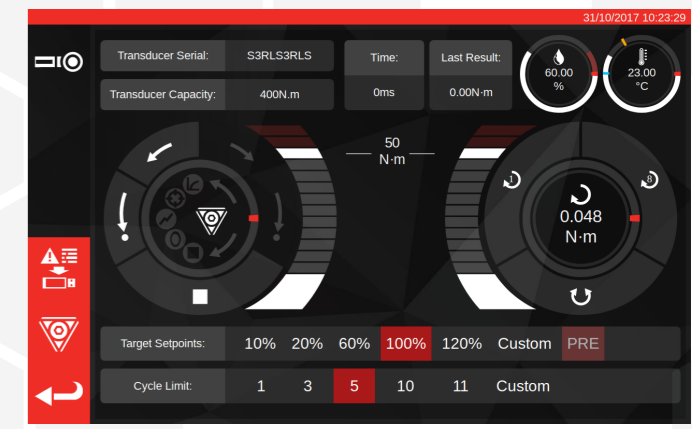
Main menu



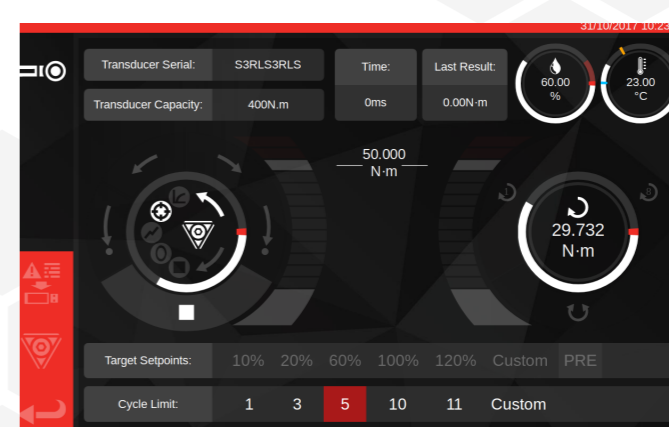
Tool template editor



Calibration job booking / editor



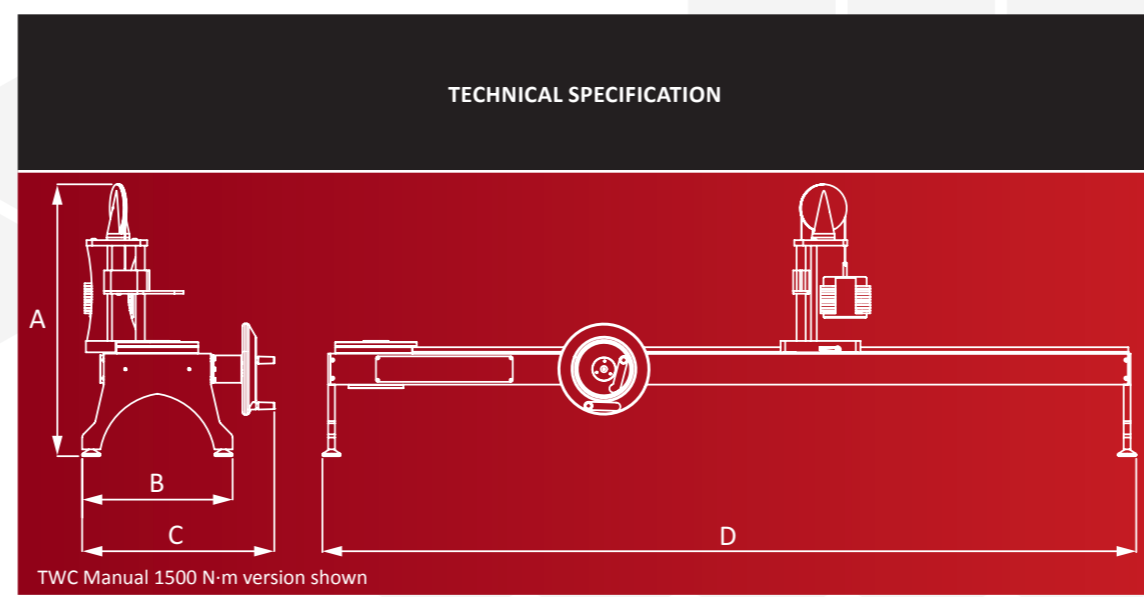
Tool cycling and adjustment



Tool cycling and adjustment whilst in operation



TWC Manual shown with a T-Box XL™ and a Flange Mounted Transducer



TWC Manual 1500 N-m version shown

MODEL	MANUAL		AUTO	
	400 N-m 295 lbf-ft	1500 N-m 1100 lbf-ft	400 N-m 295 lbf-ft	1500 N-m 1100 lbf-ft
Part Number	60311	60314	60312	60313
Wrench Length (Torque Radius)	Min	135	135	135
	Max	750	1500	750
Dimensions	A	596	596	596
	B	330	330	330
	C	421	421	N/A
	D	1035	1785	1035
Weight (kg)	35	40	TBC	TBC

