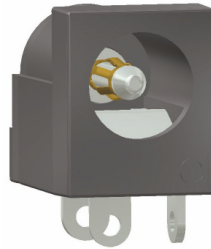
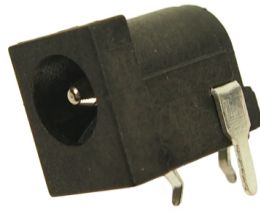
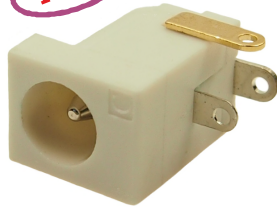


DC10L DUAL DC SOCKET

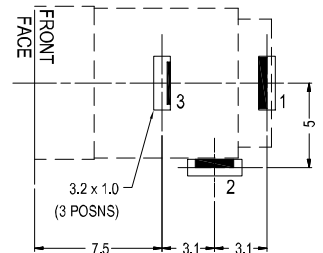
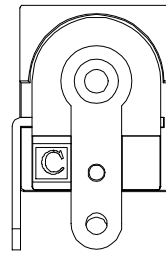
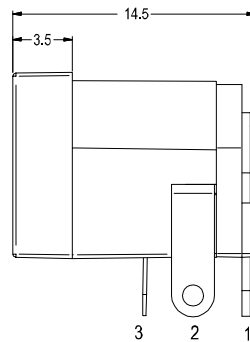
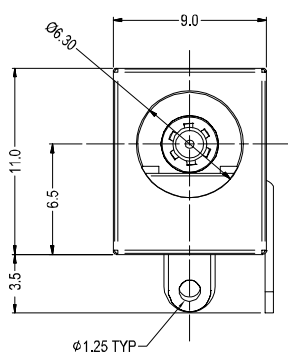
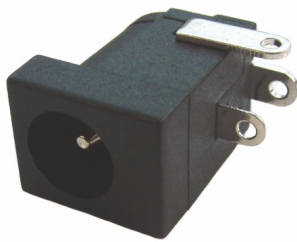
Accepts 2.1mm & 2.5mm Plugs

NEW

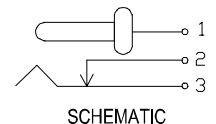


DC10L NOW AVAILABLE IN WHITE

- Body material is PBT for superior temperature characteristics.
- Contacts are Copper alloy / Tin plated.
- Available in 90° PCB mounting or Solder tag / Chassis mounting.
- RoHS compliant.
- UK Patent No: 2447648, USA Patent No: 7648380



PC LAYOUT
(COMPONENT SIDE - SOCKET OMITTED FOR CLARITY)



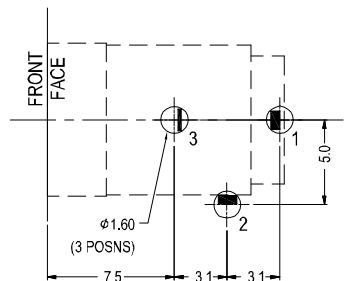
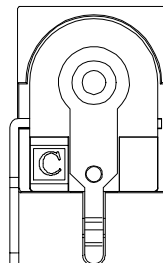
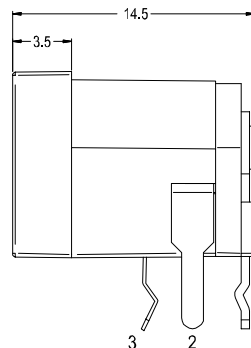
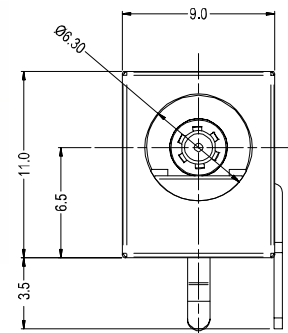
Part No. FC681465 - BLACK
FCR681466 - WHITE

SPECIFICATION

RATED: 5A / 12V DC.

LIFE: 5,000 INSERTIONS MINIMUM.

INSULATION RESISTANCE BETWEEN ANY OPEN CONTACT: >100MW @ 500V DC.



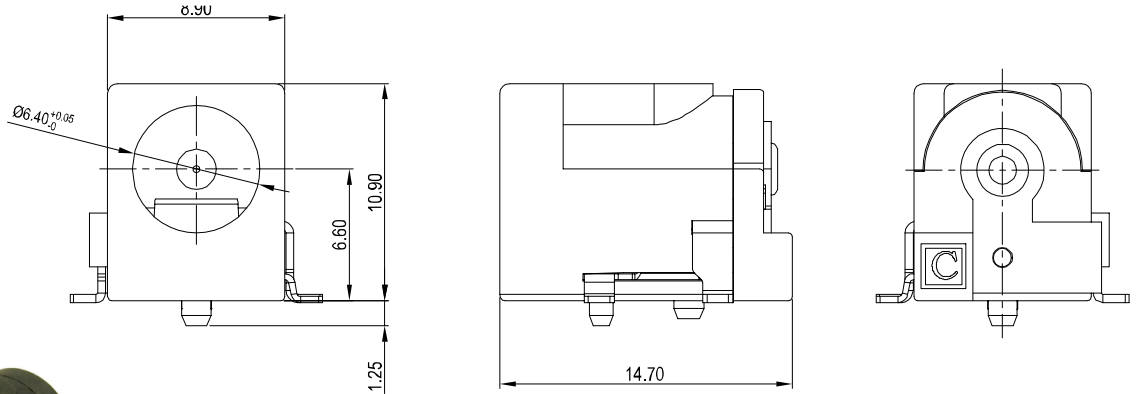
PC LAYOUT
(COMPONENT SIDE - SOCKET OMITTED FOR CLARITY)

Part No. FC681465P - BLACK
FCR681466P - WHITE

For further information, contact sales@cliffuk.co.uk

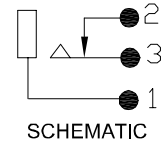
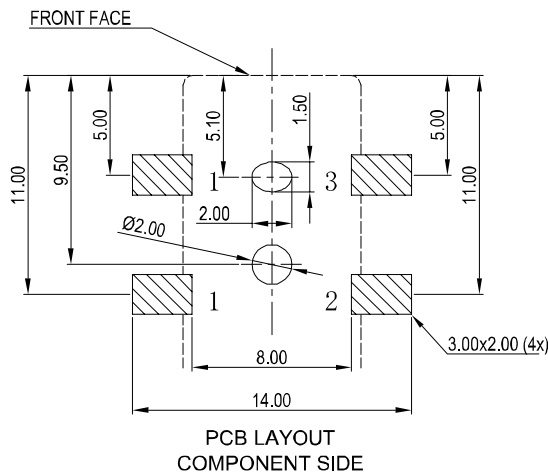
CLIFF

DC10LS SMD DUAL DC SOCKET Accepts 2.1mm & 2.5mm Plugs



Part No. FC681465S

Also supplied taped
Part No. FC681465ST



SPECIFICATION

RATED: 2A / 12V DC.

INSERTION / WITHDRAWAL FORCE: 0.3-2 kgf.

LIFE: 5,000 INSERTIONS MINIMUM.

CONTACT RESISTANCE:

INITIAL: PLUG / CONTACT <math>< 50\text{m}\Omega</math>, CONTACT / SHUNT <math>< 30\text{m}\Omega</math>.

AFTER LIFE TEST: PLUG / CONTACT <math>< 100\text{m}\Omega</math>, CONTACT / SHUNT <math>< 60\text{m}\Omega</math>.

BELTRONICA NUEVA DIRECCIÓN / NEW ADDRESS

Avenida de Somosierra, 22 - Naves E 6 y 7 - P. E. Inbisa I

San Sebastián de los Reyes - ES 28703 - Madrid

Tel / Phone: +34 916 381 331 - comercial@beltronica.es

For further information, contact sales@cliffuk.co.uk

Cliff Electronic Components Limited,
76 Holmethorpe Avenue, Holmethorpe Ind. Estate,
Redhill, Surrey RH1 2PF U.K.
Tel: +44 (0)1737 771375 Fax: +44 (0)1737 766012



Visit us online at:
www.cliffuk.co.uk