

IP66 General Purpose Enclosures Technical Specification

If you require light protection against water ingress, this range could be ideal. With an IP66 seal, this range is dust proof, splash proof and protects from powerful jets of water, as per BS EN 60529:1992.

15 sizes are available, complete with silicone gasket, captive screws, earth screws and PCB guides on selected sizes. Nine sizes are also available with flanges for easy mounting.

Deltron Enclosures can customise any enclosure in our UK factory, including machining, painting, component sourcing and installation to meet your specification, save time and cut your costs. View our Services page on our website for more information.



For more information:

Avenida de Somosierra, 22 - naves E 6 y 7 - P. E. Inbisa I
ES28703 San Sebastián de los Reyes (Madrid)
Teléfono / Phone: +34 916 381 331

Features:

- IP66 Rated
- Manufactured from ADC12
- Certified to BS EN 60529:1992
- RoHS Compliant
- Silicone Seal

Typical Applications:

- Test & Measurement Instrumentation
- Medical Tools
- Transportation Equipment
- Industrial Controls
- Lighting Applications

Available Dimensions (mm):

| | |
|-----------------|---------------------------|
| 89 x 35 x 31* | 114 x 64 x 31* |
| 114 x 89 x 56* | 114 x 65 x 56* |
| 172 x 121 x 56* | 172 x 121 x 107* |
| 222 x 146 x 56* | 222 x 146 x 107 |
| 275 x 175 x 66 | 140 x 102 x 77* |
| 165 x 127 x 77 | 120 x 100 x 36* |
| 250 x 250 x 100 | 80 x 55 x 26 |
| 60 x 55 x 31 | *= Available with Flanges |

Finishes: Plain Aluminium, Powder or Nylon coat.

Coating Colours: Grey, Blue or Black.

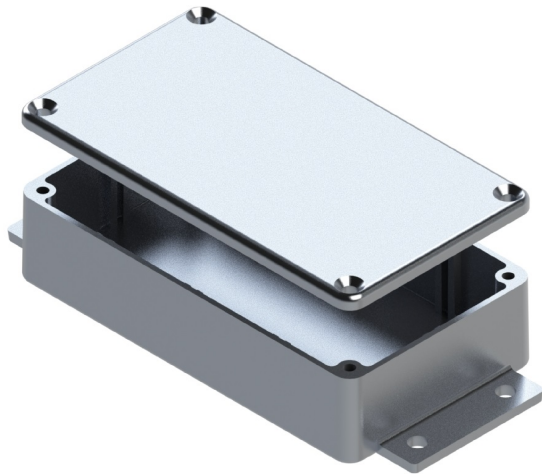
Spares: Gasket and Screws.

Or choose to have your enclosure customised for bespoke finishes and colours.

DEM Manufacturing

Deltron Emcon House,
Hargreaves Way,
Sawcliffe Industrial Park,
Scunthorpe, DN15 8RF.

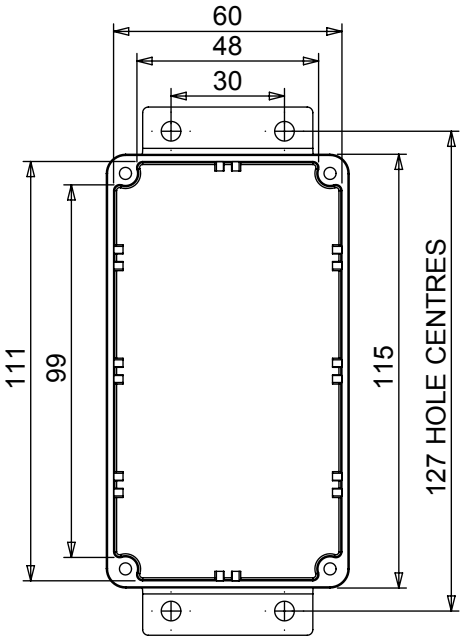
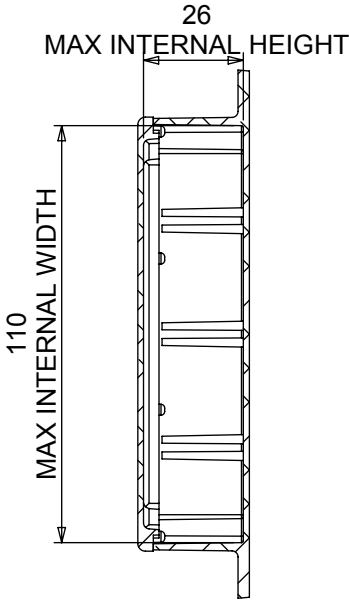
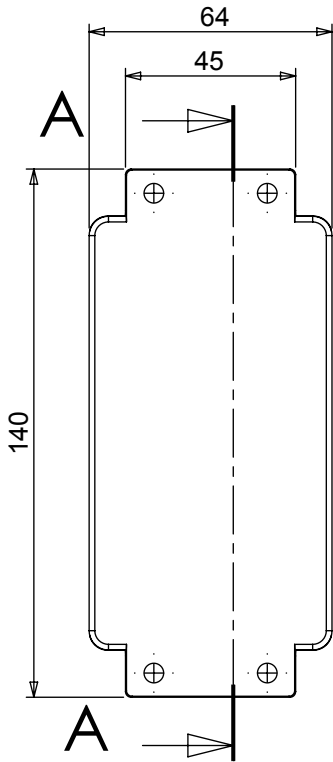
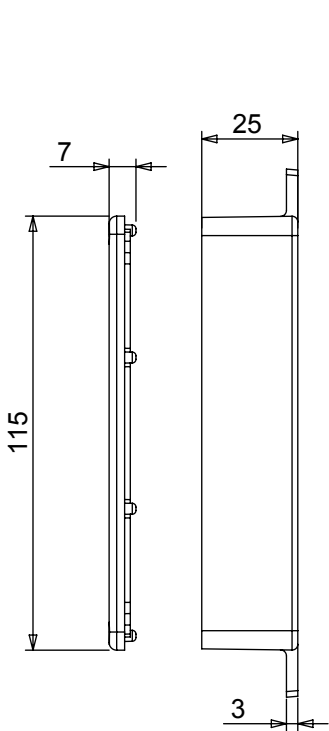
| 1 | | 2 | | 3 | 4 | 5 | 6 | 7 |
|-----|-------------|------------|-----------------------|---|---|---|---|---|
| REV | DATE | ECN NUMBER | ECR COMMENT | | | | | |
| 004 | 06 Jun 2017 | C03614 | | | | | | |
| 003 | 26 May 2017 | C03614 | TORQUE SETTINGS ADDED | | | | | |



| FLG LENGTH | LENGTH | WIDTH | HEIGHT | SEAL | TORQUE SETTINGS | PLAIN | POWDER COAT | NYLON COAT |
|---------------------|--------|-------|--------|---|-----------------|----------|-------------|------------|
| 140 | 115 | 64 | 30 | NONE | NONE | 455-0020 | 457-0020* | 458-0020* |
| | | | | IP66 | 0.3Nm | 456-0020 | 463-0020* | 464-0020* |
| | | | | IP68 | 0.7Nm | 483-0020 | 484-0020* | 485-0020* |
| | | | | IP68 EMI/RFI | 1.0Nm | 483-C020 | 484-C020* | 485-C020* |
| BOX DIMENSION IN MM | | | | COLOUR OPTION - COLOUR SUFFIX * GREY=A / BLUE=B / BLACK = E | | | | |

STANDARD DUTY ENCLOSURE

- Material grade ADC12/LM2 Die Cast Alloy
- IP Rated available
- Min wall thickness 1.5mm
- Min lid thickness 1.5mm
- Fine textured powder coating and smooth nylon
- Screws stainless steel
- IP68 Tested to 5 metres for 1 hour
- Includes internal PCB guides
- Enclosures can be supplied fully factory customised to your specification



DELTRON Components

DELTRON Enclosures

ROXBURGH EMC

b.e.s.

DEM

Alpha3 manufacturing

+44(0)1724 273200

www.dem-uk.com

PROPRIETARY AND CONFIDENTIAL:
THE INFORMATION CONTAINED IN THIS DRAWING IS THE SOLE PROPERTY OF ALPHA 3 MANUFACTURING. ANY REPRODUCTION IN PART OR AS A WHOLE WITHOUT THE WRITTEN PERMISSION OF ALPHA 3 MANUFACTURING IS PROHIBITED.
DEM Manufacturing is a division of Alpha 3 Manufacturing LTD
DEM Manufacturing, Deltron Emcon House, Hargreaves Way, Sawcliffe Ind. Park, Scunthorpe, North Lincolnshire, DN15 8RF, UK

UNLESS OTHERWISE SPECIFIED DIMENSIONS ARE IN MILLIMETRES
LINEAR & RADIAL TOLERANCE:
NO DECIMAL PLACES
1 DECIMAL PLACE
2 DECIMAL PLACES
ANGULAR TOLERANCE:

| IF IN DOUBT ASK! DO NOT SCALE DRAWING! | |
|--|-----------------|
| FINISH | SEE NOTES |
| MATERIAL | ALUMINIUM ALLOY |
| THE FINISHED PRODUCT SHOULD BE CLEAN AND FREE FROM ALL LIQUIDS AND DEBRIS. SURFACES SHOULD BE OF UNIFORM APPEARANCE FREE FROM SHARP EDGES, BURRS AND CORROSION | |

| | | | |
|------------------------|--------------|-------------------------|-----------------------|
| AUTHOR Alex Yau | | TITLE FLANGED ENCLOSURE | |
| EDITOR DT | | FILE B FLG ENCLOSURE | |
| APPROVER DT | | PART BOX & LID ASSEMBLY | |
| THIRD ANGLE PROJECTION | SHEET 1 OF 1 | ISSUE/REV. 004 | VERSION 14 |
| | SCALE 1:2 A4 | RELEASED | EDIT DATE 06 Jun 2017 |