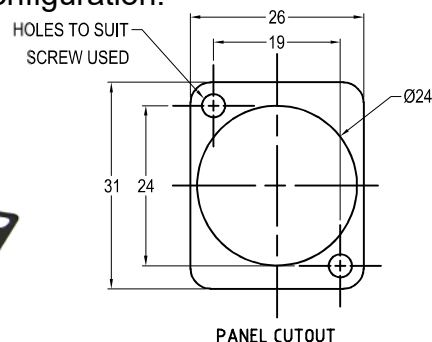


# FEED THROUGH CONNECTORS

## FT Series

The FT Series of true feed through connectors are perfect for developing custom I/O configurations for wall-plates, rack panels, etc. ALL fit within a standard XLR panel cutout, and use common cabling for front and back connections. No soldering, no punch terminations, just use the standard cable for that particular connector style. Mount from the front or back, low rear profile accommodates the tightest "behind the panel" spaces. Available in a wide variety of styles. Functionality is affected by cable quality, length and cable wiring configuration.



Part No.	Description
<b>CP30200G</b>	HDMI A Female to HDMI A, Gold Plated, CSK hole.
<b>CP30200GX</b>	As above with Plain hole.



Part No.	Description
<b>CP30201</b>	USB-C Female-Female, CSK hole.
<b>CP30201X</b>	As above with Plain hole.

**Not compatible with power delivery (PD) charging.**

**NEW**



Part No.	Description
<b>CP30202</b>	Mini Displayport, CSK hole.
<b>CP30202X</b>	As above with Plain hole.



Part No.	Description
<b>CP30203N</b>	USB 2.0 B to USB 2.0 B, Nickel Plated, CSK hole.
<b>CP30203NX</b>	As above with Plain hole



Part No.	Description
<b>CP30204N</b>	USB 3.0 B to USB 3.0 B, Nickel Plated, CSK hole.
<b>CP30204NX</b>	As above with Plain hole



**Part No.**      **Description**  
**CP30205N**    USB 3.0 A to USB 3.0 A, Nickel Plated, CSK hole.  
**CP30205NX**   As above with Plain hole



**Part No.**      **Description**  
**CP30206N**    USB 3.0 B to USB 3.0 A, Nickel Plated, CSK hole.  
**CP30206NX**   As above with Plain hole



**Part No.**      **Description**  
**CP30207N**    USB 2.0 B to USB 2.0 A, Nickel Plated, CSK hole.  
**CP30207NX**   As above with Plain hole



**Part No.**      **Description**  
**CP30208N**    USB 2.0 A to USB 2.0 A, Nickel Plated, CSK hole.  
**CP30208NX**   As above with Plain hole



**Part No.**      **Description**  
**CP30209N**    USB 2.0 A to USB 2.0 B, Nickel Plated, CSK hole.  
**CP30209NX**   As above with Plain hole



**Part No.**      **Description**  
**CP30210N**    USB 3.0 A to USB 3.0 B, Nickel Plated, CSK hole.  
**CP30210NX**   As above with Plain hole



**Part No.**      **Description**  
**CP30211**      USB C Female to Male, Nickel Plated, CSK hole.  
**CP30211X**    As above with Plain hole

For further information, contact [sales@cliffuk.co.uk](mailto:sales@cliffuk.co.uk)

**Cliff Electronic Components Limited**

76 Holmethorpe Avenue, Holmethorpe Ind. Estate,  
Redhill, Surrey RH1 2PF U.K.

Tel: +44 (0)1737 771375 Fax: +44 (0)1737 766012



Visit us online at: [www.cliffuk.co.uk](http://www.cliffuk.co.uk)



**Part No.**  
**CP30212**  
**CP30212X**

**Description**  
Dual USB C Female to Male, Nickel Plated, CSK hole.  
As above with Plain hole



**Part No.**  
**CP30213**  
**CP30213X**

**Description**  
LC Duplex SM adaptor, Black, CSK Hole  
As above with Plain hole



**Part No.**  
**CP30214**  
**CP30214X**

**Description**  
LC Duplex MM, Black, CSK Hole  
As above with Plain hole



**Part No.**  
**CP30215**  
**CP30215X**

**Description**  
SC Simplex SM, Black, CSK Hole  
As above with Plain hole



**Part No.**  
**CP30216**  
**CP30216X**

**Description**  
SC Simplex MM, Black, CSK Hole  
As above with Plain hole



**Part No.**  
**CP30217**  
**CP30217X**

**Description**  
Toslink, CSK Hole  
As above with Plain hole



**Part No.**  
**CP30218**  
**CP30218X**

**Description**  
ST Fibre, CSK Hole  
As above with Plain hole



**Part No.**  
**CP30219**  
**CP30219X**

**Description**  
FC Fibre, CSK Hole  
As above with Plain hole





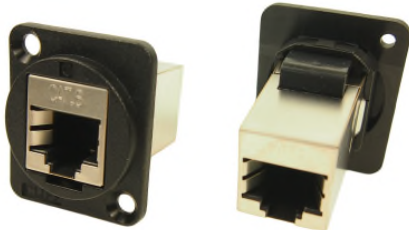
**Part No.**  
**CP30220**  
**CP30220X**

**Description**  
UTP Cat5e RJ45-RJ45, CSK Hole  
As above with Plain hole



**Part No.**  
**CP30220S**  
**CP30220SX**

**Description**  
FTP Cat5e RJ45-RJ45, Shielded, CSK Hole  
As above with Plain hole



**Part No.**  
**CP30222S**  
**CP30222SX**

**Description**  
FTP Cat6 RJ45-RJ45, Shielded, CSK Hole  
As above with Plain hole



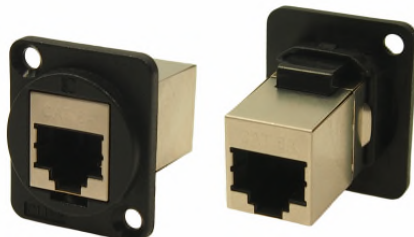
**Part No.**  
**CP30222**  
**CP30222X**

**Description**  
UTP Cat6 RJ45-RJ45, CSK Hole  
As above with Plain hole



**Part No.**  
**CP30223**  
**CP30223X**

**Description**  
CAT3 RJ11 6P4C, CSK Hole  
As above with Plain hole



**Part No.**  
**CP30225S**  
**CP30225SX**

**Description**  
Cat6A RJ45-RJ45, Shielded, CSK Hole  
As above with Plain hole



**Part No.**  
**CP30230**  
**CP30230X**  
**CP30231**  
**CP30231X**  
**CP30232**  
**CP30232X**

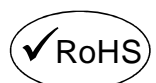
**Description**  
RCA Phono RED, CSK Hole  
As above with Plain hole  
RCA Phono WHITE, CSK Hole  
As above with Plain hole  
RCA Phono YELLOW, CSK Hole  
As above with Plain hole  
Other colours available on request.

For further information, contact [sales@cliffuk.co.uk](mailto:sales@cliffuk.co.uk)

## Cliff Electronic Components Limited

76 Holmethorpe Avenue, Holmethorpe Ind. Estate,  
Redhill, Surrey RH1 2PF U.K.

Tel: +44 (0)1737 771375 Fax: +44 (0)1737 766012



[www.cliffuk.co.uk](http://www.cliffuk.co.uk)



**Part No.**      **Description**  
**CP30240**      2 Wire Terminal, CSK Hole  
**CP30240X**      As above with Plain hole  
 Low voltage use only. Max rating 25VAC, 60VDC, 10A.



**Part No.**      **Description**  
**CP30241**      Blanking Plate, CSK Hole  
**CP30241X**      As above with Plain hole



**Part No.**      **Description**  
**CP303090**      BNC 50 Ohm, CSK Hole  
**CP303090X**      As above with Plain hole



**Part No.**      **Description**  
**CP303095**      BNC 75 Ohm, CSK Hole  
**CP303095X**      As above with Plain hole



**Part No.**      **Description**  
**CP303112G**      12GHz Gold BNC 75 Ohm, CSK Hole  
**CP303112GX**      As above with Plain hole

**BELTRONICA**

NUEVA DIRECCIÓN / NEW ADDRESS

Avenida de Somosierra, 22 - Naves E 6 y 7 - P. E. Inbisa I

San Sebastián de los Reyes - ES 28703 - Madrid

Tel / Phone: +34 916 381 331 - comercial@beltronica.es

For further information, contact sales@cliffuk.co.uk

**Cliff Electronic Components Limited**76 Holmethorpe Avenue, Holmethorpe Ind. Estate,  
Redhill, Surrey RH1 2PF U.K.

Tel: +44 (0)1737 771375 Fax: +44 (0)1737 766012



www.cliffuk.co.uk