

# LOCK SWITCH

## WRL IP66/IP67 SEALED LOCK SWITCH

### ELECTRICAL & MECHANICAL SPECIFICATION

<b>Switch Rating:</b>	1A @115V ac.	<b>Life:</b>	>10,000 Cycles
(Resistive load)	1A @24V dc	<b>Operating Temperature:</b>	-20°C to +65°C
<b>Proof Voltage:</b>	750 Vac (Initial)	<b>Lock Type:</b>	5 Disc
<b>Insulation Resistance:</b>	>999MΩ @ 500Vdc (Initial)	<b>Lock Housing:</b>	Zinc Alloy Bright Cr Plated
<b>Contact Resistance:</b>	<20mΩ (Initial)	<b>Moulding Material:</b>	Polyamide 6.6 G.F. V0 Rated
<b>Contact Material:</b>	Brass CZ108, Ag Plated		

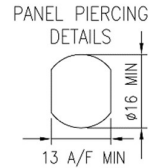
### FEATURES

Suitable for Marine Environment Exposure to Severity One (EN60068-2-52) salt mist tested

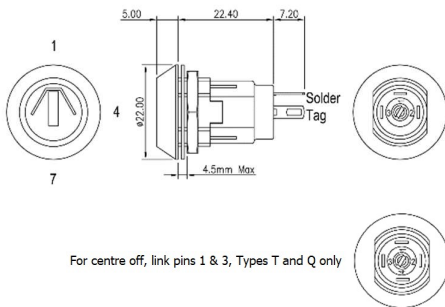
Front assembly  
Single or Double pole  
Max panel thickness 3.5mm  
Rear panel depth - <30mm  
Made in UK

2 keys per switch  
Up to 200 differ key combinations available  
Keys are double entry (can be inserted into lock either way up)

Moulded bezel available for parallel lock headed version (SRL02101).  
Oil regularly if used outside



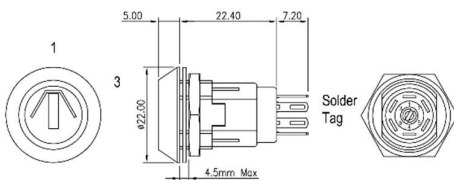
### SINGLE POLE LOCK SWITCH



### TAPERED LOCK HEAD 90° INDEXING

BASIC PART No.	TOTAL MOVEMENT	INDEXING	KEY WITHDRAWAL POSITIONS	SWITCH CONFIGURATION
WRL-5-D	90°	90°	1,4	
WRL-5-E	90°	90°	1 ONLY	
WRL-5-F	180°	90°	1,4,7	
WRL-5-P	180°	90°	1,4,7	
WRL-5-T	180°	90°	1,4,7	
WRL-5-Q	180°	90°	4 ONLY	

### DOUBLE POLE LOCK SWITCH



### TAPERED LOCK HEAD 60° INDEXING

IC No.	TOTAL MOVEMENT	INDEXING	KEY WITHDRAWAL POSITIONS	SWITCH CONFIGURATION
5-L	60°	60°	1,3	
5-M	60°	60°	1 ONLY	

### WRL ORDERING CODE

W R L - 5 - [ ] - [ ] - 2

Add suffix **V** for Vandal Resistant Option

<b>STYLE</b> A - Q	<b>KEYS:</b> S = Same key number (901) D = Differs (200 differs available)	<b>NUMBER OF KEYS</b> (2 is standard)
-----------------------	--	--

## BELTRONICA

NUEVA DIRECCIÓN / NEW ADDRESS

Avenida de Somosierra, 22 - Naves E 6 y 7 - P. E. Inbisa I

San Sebastián de los Reyes - ES 28703 - Madrid

Tel / Phone: +34 916 381 331 - comercial@beltronica.es